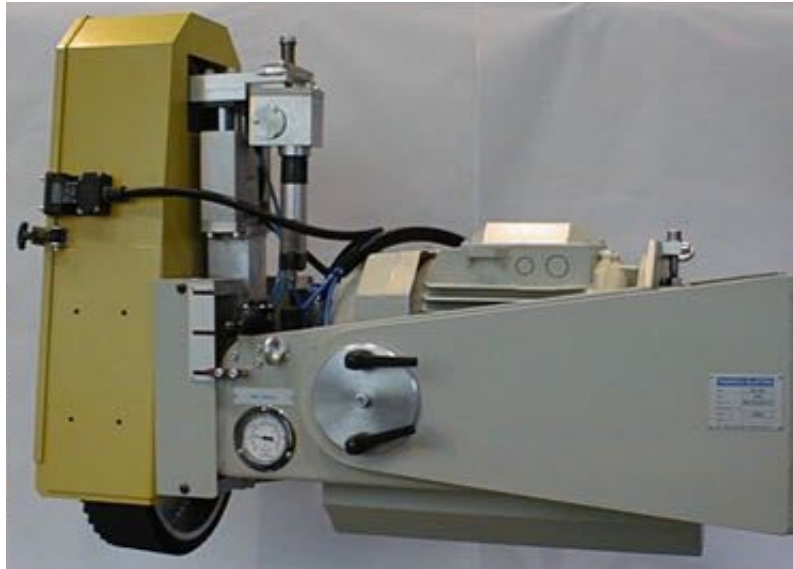


Vessel Grinding Head MS-500



Application

The MS-500 is used for the following applications:

- the internal and external grinding of surfaces on pipes and vessels
- the grinding of internal and external longitudinal and circumferential weld seam reinforcements

If necessary the grinding head can be mounted into a turning fork. This allows the preparation of welding edges on flat plates and on the face of vessels, sections and pipes.

Technology

The floating grinding head follows automatically any run-outs of the work piece with constant pressure.

The weight of the floating part of the grinding head was reduced to a minimum by mounting the driving motor to the basic part. The power is transmitted by a cardan drive.

The precise adjustment of the grinding pressure with a pneumatic control system and a belt oscillation ensures an optimal Utilization of the grinding belts.

The belt change requires only a few manipulations.

Pneumatic belt tension and belt running correction.

The MS-500 can be equipped with grinding belts as well as polishing rings, wire brushes, flap wheels, Scotch-Brite-discs and belts.

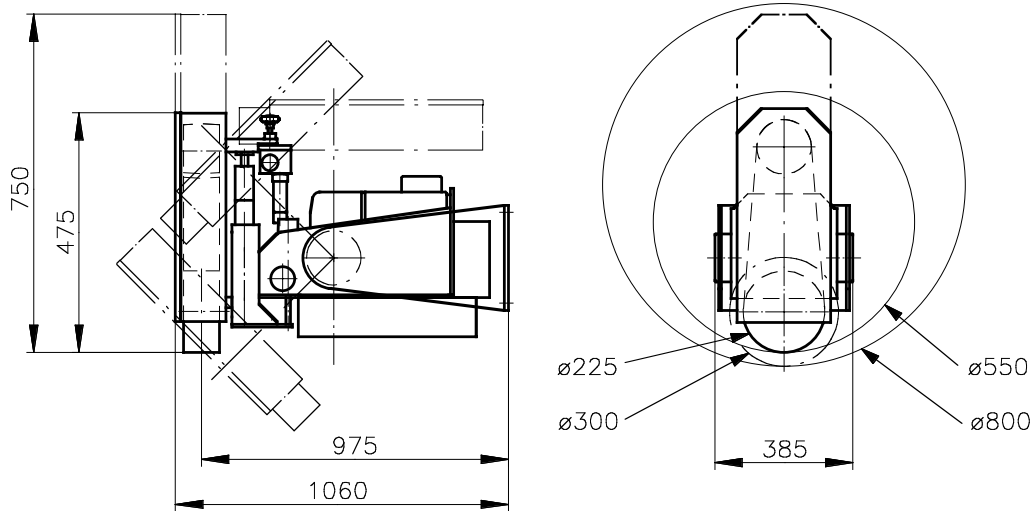
Performance

Very high rates of material removal.

- low alloy steel up to 475 g/min.
- stainless steel up to 300 g/min.

Any desired surface finish can easily be achieved by using finer and finer grain of belts.

Vessel Grinding Head MS-500



Technical Data

free floating of the grinding head
grinding pressure adjustable from
smallest internal diameter to be ground
with grinding belt 1100 mm, without dust extraction
with grinding belt 1700 mm, without dust extraction
adjustable angle of turning fork
power

± 50 mm

0 to 600 N

550 mm

800 mm

± 90°

9 kW

Dimensions

height, depending on belt length
width
length

475 - 750 mm

385 mm

1060 mm

contact wheels

∅ 225 mm x 50/100 mm

∅ 300 mm x 50/100 mm

grinding belts

50/100 mm x 1100 mm

50/100 mm x 1700 mm

Weight

grinding head incl. turning fork

approx. 200 kg